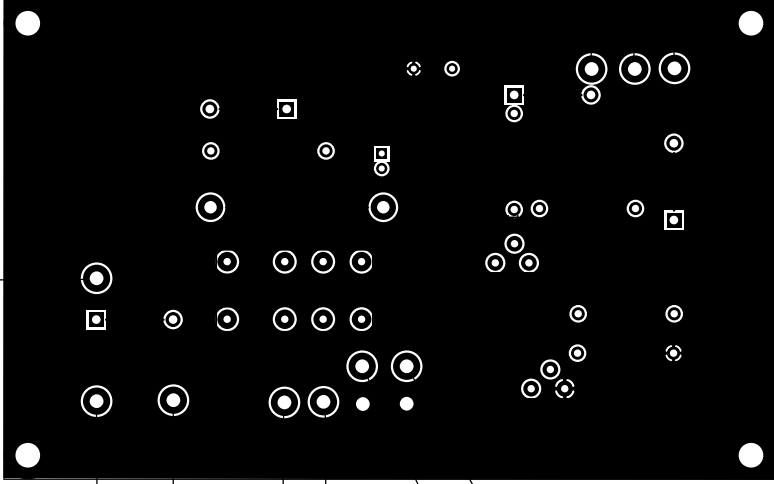


From Opr/Stdby Switch Wht/Grn 36"



To 24V Coil RY1 Blk 9"

To 24V Coil RY1 Blk 9"

RF Input From J2 Wht 9"

RF Output to NC RY1 Wht/Brn 12"

RF Output to TI PCB Coax 18"

RF Output to ALC/PMR PCB Coax 36"

Frm LY Bias & Cntrl PCB org 36"

Frm J3 XMT Key Pur 12"

Frm J4 +12V XMT Blu 12"